



**PHILIPS**

Ultrasound

Affiniti 50

**It understands  
your everyday**

Philips Affiniti 50 ultrasound system for Ob/Gyn

Designed to set you ahead and help you stay ahead, Philips Affiniti 50 ultrasound system delivers innovation that responds to the needs of a busy ultrasound practice.

# Designed for **balance**

You always go above and beyond to provide the best care to your patients. But you are expected to do so with less time, fewer resources, and higher patient volume. To balance these many demands, you need diagnostic information quickly but not at the expense of accuracy. You need advanced functionality but not at the expense of ease of use. You need a system that is ergonomic but built to last for the daily rigors of high patient volume.

Philips Affiniti 50 ultrasound system helps you achieve this balance. It delivers outstanding image quality and advanced tools for all gestational ages and complex gynecological cases – in a system that is out-of-the-box usable. Its simplified yet intuitive user interface and easy access to critical features produce superb diagnostic information quickly – all in an ergonomic design, to let you work with less reach and fewer steps. Its exceptional performance and intuitive design help you provide elegant, efficient care – every day.

## **TrueVue with TouchVue interface – photorealistic 3D fetal imaging at your fingertips**

TrueVue offers a powerful 3D visualization tool that produces highly realistic imaging of fetal and gynecological anatomy. TrueVue features an innovative internal light source that provides illumination at any location within the 3D volume for exceptional visualization of anatomy. The internal light source allows the freedom to adjust the amount of light and shadow displayed on anatomical structures to reveal subtle detail not obtainable with conventional 3D rendering.

In addition, the GlassVue feature provides an early, more transparent view of the fetal anatomy than traditional ultrasound. The advanced 3D imaging tool goes beyond the surface to reveal bone, organs, and other internal structures. Users have control over the amount of transparency in the 3D volume.

TrueVue features an interactive interface called TouchVue. The TouchVue interface utilizes the Affiniti 50 touchscreen to allow fingertip control of both volume rotation and internal light source position directly on the TrueVue 3D image.

## **aReveal<sup>AI</sup>: automatic 3D segmentation**

aReveal<sup>AI</sup> uses an anatomical intelligent algorithm (AIUS)\* that enhances 3D workflow and reduces the time and complexity of obtaining fetal face images. With a simple button push, aReveal<sup>AI</sup> automatically sculpts away 3D data proximal to the fetal face by recognizing the geometry of the fetal skull, revealing the fetal face surface.



With **TrueVue**, a moveable light source illuminates 3D volumes internally or externally.

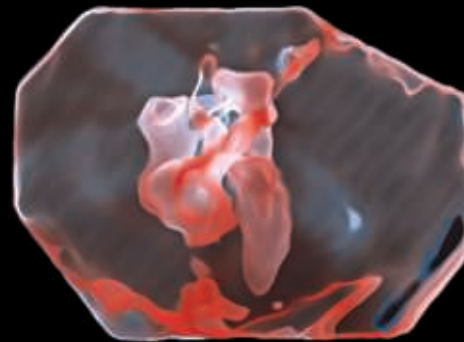


Different examples of light source position and depth

The **GlassVue** feature provides an early, more transparent view of the fetal anatomy than traditional ultrasound.

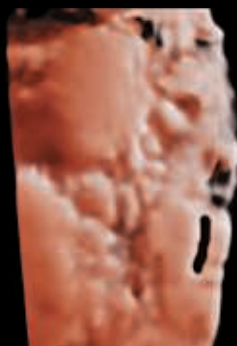


11 weeks of gestation



Fetal heart at 29 weeks of gestation

**aReveal<sup>AI</sup>** is an advanced feature of Philips AIUS that removes extraneous information to quickly and easily reveal the fetal face.



Before aReveal<sup>AI</sup>



After aReveal<sup>AI</sup> applied

**\* AIUS turns data into information**

Anatomical Intelligence Ultrasound (AIUS) looks at a patient's ultrasound data and applies adaptive system intelligence using 3D anatomical models to create easier and more reproducible results.

# Workflow meets **WOW**

With the Affiniti 50 ultrasound system, workflow meets wow. The system incorporates those innovations that make Philips ultrasound the choice of those who demand high image quality and proven clinical applications, while also addressing the everyday need to scan quickly and deliver results efficiently, even for complex cases.

Affiniti 50's precision beamforming with a wide dynamic range delivers superb spatial and contrast resolution, outstanding tissue uniformity, few artifacts, and reduced image clutter. TSPs adjust over 7500 parameters to optimize the transducer for the specific exam type, producing excellent image quality with little or no need for image adjustment. This outstanding image quality combines with advanced clinical functionality.

#### **Assess uterine tissue stiffness**

Highly sensitive strain elastography can be used to assess relative tissue stiffness. Because it requires no external compression, it delivers exam consistency and reproducibility.

Affiniti 50's precision beamforming, Tissue Specific Presets (TSP), and efficiency and automation tools deliver both performance and workflow for confident throughput.



**Automation tools save time**

Philips Affiniti 50 system is our most automated ultrasound system in its class, ever. It is equipped with automation features that enhance workflow, decrease repetitive tasks, and enhance ease-of-use and consistency of exams among users. These include:

- **aBiometry Assist<sup>AI</sup>**: Virtually every obstetrical ultrasound examination includes standardized measurements of fetal structures to assess age and growth trends. aBiometry Assist<sup>AI</sup> uses anatomical intelligence of fetal anatomy to automatically preplace measurement cursors on selected structures, which users can quickly accept or edit. This helps reduce conventional measurement steps and streamlines obstetrical report generation. aBiometry Assist<sup>AI</sup> allows selection of auto measure function for BPD, HC, AC, and FL fetal structures.
- **Real-time iSCAN (AutoSCAN)**: Provides outstanding images in 2D, 3D, or 4D by automatically and continuously optimizing gain and TGC.



aBiometry Assist<sup>AI</sup> allows selection of auto measure function for BPD, HC, AC, and FL fetal structures.

- **SmartExam guided workflow**: Increases consistency, reduces keystrokes, and decreases exam time by 30%–50%<sup>1</sup> by automatically planning and processing application protocols. Fast and easy to customize, SmartExam provides consistent and accurate annotation, automatic mode switching, and missed view alerts to streamline exams.
- **Efficient fetal scanning**: Ability to create protocols for all trimesters and specialty exams such as trisomy 13 and 21.

**Elevated Ob/Gyn imaging versatility with Tilt feature**

The Tilt feature of the 3D9-3v transducer provides lateral steering of the 2D image plane to the right or left. 2D Tilt allows scanning access to anatomical structures that are off-axis without having to manually angle the transducer for maximum scanning versatility during the exam.



Right ovary and right adnexa acquired with Tilt feature.

**Q-App quantification applications**

Affiniti 50 offers sophisticated Q-Apps to quantify ultrasound image information.

- General Imaging 3D Quantification (GI 3DQ)
- Region of Interest (ROI)

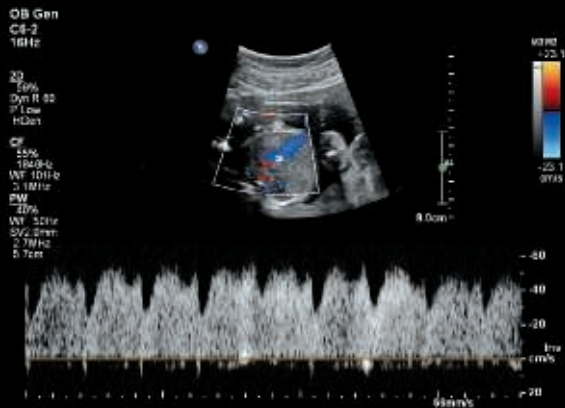
Broadband transducers include the C6-2, C9-4v, C10-4ec, L12-5, L12-4, S8-3, V6-2, and 3D9-3v for all types of obstetrical and gynecological exams.



<sup>1</sup>Drose J. Saving time while increasing revenue. University of Colorado Hospital. April 2007.

# Performance

you can see



Doppler ductus venosus



Fetal abdomen



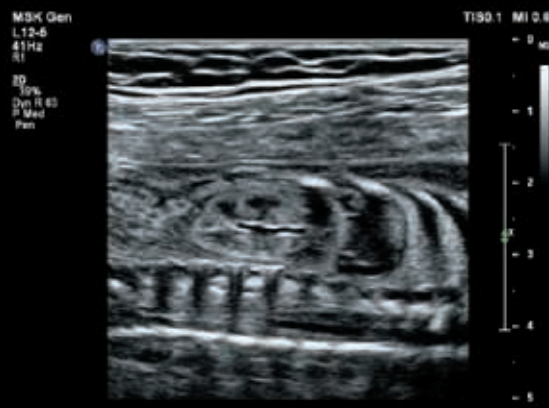
Fetal spine



Nuchal translucency



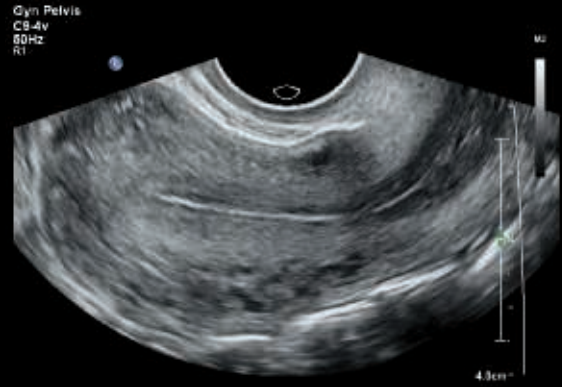
Middle cerebral arteries



Fetal kidney



Early OB at 9 weeks of gestation



Long uterus



OB fetal abdomen



Fetal heart at 28 weeks of gestation



Long ovary



MPR at 8 weeks of gestation

Ergonomic and elegant with walk-up usability, Affiniti 50 requires minimal training to learn.

# Comfort meets **competence**

Philips leverages the experiences of its customers to design Affiniti 50 to address the challenges of daily scanning. We understand the reality of tight spaces, high patient volume, technically difficult patients, and time constraints, and we've designed the system with thoughtful details to help lighten your workload.



You won't notice it's there unless it's gone, but users have reported that easy clip, our innovative cable management solution, keeps cables tangle-free and reduces damage while decreasing cable strain to enhance comfort while scanning.

## MaxVue high-definition display

With a touch of a button, MaxVue brings full high-definition display quality to ultrasound imaging. Now you can experience extraordinary visualization of anatomy with 1,179,648 more image pixels when compared to the standard 4:3 display format mode. MaxVue enhances ultrasound viewing during interventional procedures and provides 38% more viewing area to optimize the display of dual, side/side, biplane, and scrolling imaging modes.

**Over one million more pixels per image**

**38% larger viewing area**

Standard  
format 4:3

**1024 X 768  
pixels**

**MaxVue**

Full high definition  
format 16:9

**1920 X 1080 pixels**





With image replication and TGCs on its tablet touchscreen, Affiniti 50 was designed to reduce reach and button pushes.



Affiniti 50's friendly design and library-quiet operation enhance patient comfort.



One of the lightest in its class, the system can be pushed down hallways and through tight spaces easily.



To reduce the time required for mobile scans, the system can be put to sleep in two seconds, and then moved to a new location, where it starts up in just seconds.

### Walk-up usability

The intuitive, intelligently designed user interface and system architecture have been validated by studies that show that users with ultrasound experience require minimal training on system use to be able to complete an exam.<sup>1</sup>

### Reduced reach and button pushes

To enhance exam efficiency, Affiniti 50 places relevant, easy-to-learn controls right at your fingertips, streamlining workflow. Affiniti 50 is designed to make a full day of scanning comfortable. Because 80% of ultrasound clinicians experience work-related pain, and more than 20% suffer a career-ending injury,<sup>2</sup> we've designed our intuitive, tablet-like touchscreen interface to reduce reach and button pushes.

The touchscreen is one of the largest in its class, so users can easily make selections and control scanning while focusing on their patients.

The control panel and generously sized 54.6 cm (21.5 in) monitor add to the system's ergonomics, enhancing scanning comfort whether standing or sitting. At just 83.5 kg (184 lb), Affiniti 50 is one of the lightest in its class and is 16% lighter than its predecessor.<sup>†</sup> With a small footprint, the system can be easily moved, and fits into small spaces.

### Ready when you need it

To reduce the time required for mobile scans, the system can be put to sleep in two seconds, and then moved to a new location, where it starts up in just seconds. When an exam is finished, a full suite of DICOM capabilities makes it easy to share information. Structured reporting facilitates patient workflow and information by giving you the ability to transfer measurements, images, and reports over network share, and wireless capability plus easy connection to printers helps you document exams.

<sup>1</sup> 2014 internal workflow study comparing Affiniti to HD15.

<sup>2</sup> Society of Diagnostic Medical Sonography, Industry Standards for the Prevention of Musculoskeletal Disorders in Sonography, May 2003.

† HD15

# A **smart** investment

Built to withstand the rigors of daily use, Affiniti 50 offers low operating costs and is backed by Philips support and value-added services. The Affiniti 50 system boasts a low total cost of ownership, making it a smart investment.

## Enhance uptime

- A modular design for enhanced reliability and rapid repair
- Philips remote services\* monitoring, which corrects issues using a standard Internet connection, reducing the need for service calls
- Access to our award-winning service organization

## Responsive relationships

The value of a Philips ultrasound system extends far beyond technology. With every Affiniti 50 system, you get access to our award-winning service organization, our competitive financing, and educational programs that help you get the most out of your system.

Affiniti 50 offers a defense-in-depth strategy, implementing a suite of security features designed to help clinical IT professionals and healthcare facilities provide additional patient data privacy and virus protection, as well as protection from unauthorized access via the ultrasound systems on hospital networks.

Affiniti 50 consumes nearly

**40%**  
less power

than its predecessor.\*\*  
It consumes less energy than a toaster and generates less heat, which can help you save on energy and cooling costs.



Service Request  
button for  
immediate access  
to Philips support.

## Exceptional serviceability

The system features a superb modular design for rapid repair.

\* Not all services available in all geographies; contact your Philips representative for more information. May require service contract.

\*\* HD15

# Count on us as your patients count on you

The value of a Philips ultrasound system extends far beyond technology. With every Affiniti 50 system, you get access to our award-winning service organization,\* competitive financing, and educational tools that help you get the most out of your system.\*\*

## Always there, always on

We work as one with your team to keep your Affiniti 50 system running smoothly.

## Remote service capabilities maximize efficiency

Easy, rapid technical and clinical support through remote desktop enables a virtual visit with a Philips expert.

If you prefer to keep your know-how in-house, the OmniSphere Remote Technical Connect application† allows your BioMed team remote access to Philips systems on your network so that you can have remote service capabilities your way.

## Remote software distribution boosts performance over the entire system lifecycle

Remote software distribution provides a simple, convenient, and safe process to seamlessly receive updates at a time that suits you, keeping your system at peak performance now and in the future.

## Proactive monitoring solutions maximize uptime

Philips proactive monitoring increases system availability by predicting potential system disruptions and proactively acting on them, letting you focus on what is most important – your patients.

## Immediate support request at your fingertips

The support request button allows you to enter a request directly from the control panel, for a fast and convenient communication mechanism with Philips experts without leaving your patient, minimizing workflow interruption.

## On-cart transducer test provides confidence in your transducer quality

On-cart transducer test provides a non-phantom method to test Affiniti 50 transducers at any time, giving you confidence in your diagnostic information.

## Sharing risk, increasing the return on your investment

Partner with us to maximize utilization and uptime of your Affiniti 50 system.

## Utilization reports for confident decision-making

Data intelligence tools can help you make informed decisions to improve workflow, deliver quality patient care, and decrease the total cost of ownership. The on-board utilization tool provides individual transducer usage data and the ability to sort by exam type. The OmniSphere Utilization Optimizer takes this a step further by providing easy-to-use charts and graphs for all of your applicable† networked Philips systems.

## Understanding your needs, designed for you

Our flexible RightFit service agreements, education offerings, and innovative financing solutions can be adapted to meet your needs and strategic priorities.

- **Technology Maximizer Program:** helps keep your system performing at its peak by continuously providing the latest software from Philips at a fraction of the cost of the same upgrades purchased individually over time.
- **Xtend Coverage:** lets you choose additional service coverage for your ultrasound equipment at the time of purchase to more easily calculate your total cost of ownership.
- **Clinical education solutions:** comprehensive, clinically relevant courses, programs, and learning paths designed to help you improve operational efficiency and enhance patient care.

## ISSL technology

- This industry-standard protocol meets global privacy standards and provides a safe and secure connection to the Philips remote services network using your existing Internet access point.
- Business optimization tools such as OmniSphere allow you to use the power of data and connectivity to generate actionable insights and enhance productivity to improve your return on investment.

\* Philips is rated number one in overall service performance for ultrasound for 23 consecutive years in the annual IMV ServiceTrak survey in the USA.

\*\* Optional. Not all services available in all geographies; contact your Philips representative for more information. May require service contract.

† Check with your Philips representative for system compatibility.



© 2017 Koninklijke Philips N.V. All rights are reserved.  
Philips reserves the right to make changes in specifications and/or to discontinue any product at any time without notice or obligation and will not be liable for any consequences resulting from the use of this publication. Trademarks are the property of Koninklijke Philips N.V. or their respective owners.

[www.philips.com/Affiniti](http://www.philips.com/Affiniti)

Printed in The Netherlands.  
4522 991 31531 \* DEC 2017