

PHILIPS

Ultrasound

Affiniti 30

It understands
your everyday

Philips Affiniti 30 cardiovascular ultrasound system

Designed for balance

Affiniti 30 is an affordable echocardiography solution that addresses the needs of a busy department or office while incorporating those innovations that make Philips ultrasound the global leader in echocardiography.

Affiniti 30 is an ergonomically designed premium ultrasound system ideal for cardiovascular and shared services clinicians looking for exceptional image quality and performance.



A complete range of transducers for cardiac and shared service usage: X7-2t xMATRIX TEE, S4-2, S8-3, D2cwc, D5cwc, L12-5, L12-4, C6-2, C9-4v, C8-5, V6-2 and 3D9-3v.



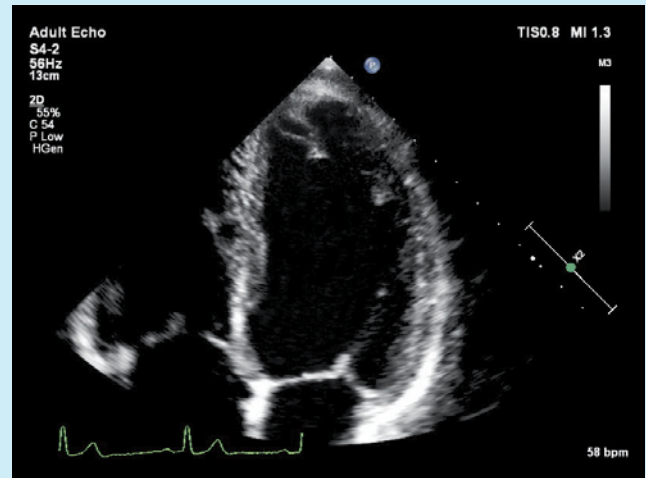
The X7-2t xMATRIX TEE transducer is a transesophageal PureWave transducer for advanced cardiac imaging.

A complete cardiovascular solution

To balance your many demands, you need diagnostic information quickly – but not at the expense of accuracy. You need advanced functionality – but not at the expense of ease of use. You need a system that is ergonomic – but built to last for the daily rigors of high patient volume.

Affiniti 30 helps you achieve this balance. Engineered for efficiency and reliability, and powered by superb Philips performance, it offers the diagnostic images you need, quickly. Intuitive design and walk-up usability help you provide elegant, efficient care – every day.

- Adult echocardiography, including TEE
- Stress echocardiography
- Vascular imaging
- Quantification tools*



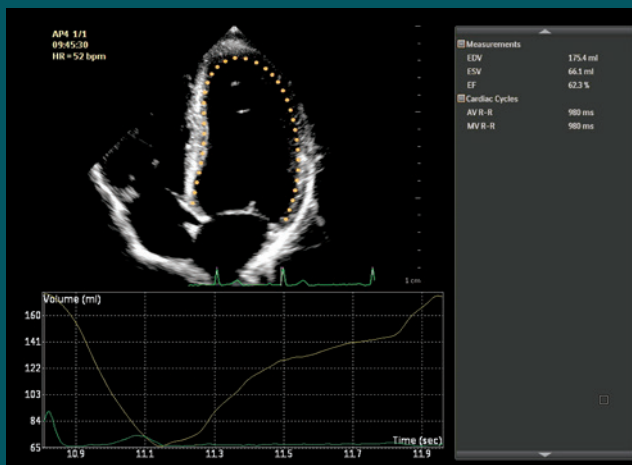
Excellent image quality with the S4-2 transducer.

* Quantification tools on Affiniti 30 are off-cart only. Not available on-cart.

Workflow meets wow

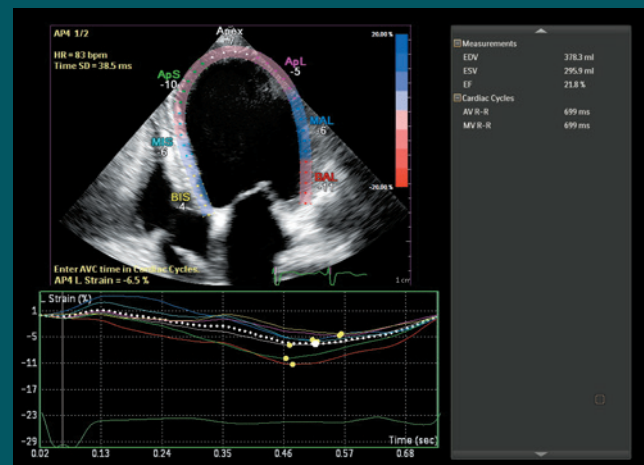
The Affiniti 30 combination of precision beamforming, Tissue Specific Presets (TSP) and other efficiency and automation tools delivers both performance and workflow advances for confident throughput. Adult and pediatric transducers with Philips exclusive Anatomical Intelligence Ultrasound (AIUS) provide automatic anatomy recognition and quantification, making it easy to perform exams and quickly deliver clinical information.

Ejection Fraction (EF) measurements are now part of nearly every exam. The ideal tool for every echo exam, Automated 2D Cardiac Quantification* offers rapid access to validated 2D EF and volumes.



Allows for fast, reproducible EF on all your patients.

Speckle strain echocardiography for quick and easy assessment of myocardial deformation (strain) in day-to-day practice, going beyond EF in the assessment of left ventricular (LV) function. Automated Cardiac Motion Quantification* provides reproducible 2D Global Longitudinal Strain (GLS) speckle measurements.



Provides both EF and GLS from the same 2D images.

Stress echocardiography offers acquisition of echocardiography single image or loops of the left ventricle in any imaging mode including 2D, color and spectral Doppler, and allows for user-defined protocols based on pre-loaded stress protocols.

Tissue Doppler Imaging (TDI) is available on all cardiac transducers for high frame rate acquisition of tissue motion.

* Quantification tools on Affiniti 30 are off-cart only. Not available on-cart.



Excellence in cardiology and shared services

Affiniti 30 offers outstanding performance in both cardiovascular and shared service capabilities so that you can deliver results quickly across a range of exam types, even for complex cases.

Strain elastography enhances diagnostic confidence for breast and gynecology ultrasound exams and provides highly sensitive and specific information that can be used to visualize, record and report on tissue stiffness parameters.

Advanced analysis and presentation* through Q-Apps allow advanced analysis and image presentations for volume imaging. iSlice supports the viewing of volume data sets in a tomographic view for better clinical understanding (such as for uterine anomalies).

SmartExam guided workflow increases consistency, reduces keystrokes and decreases exam time by 30%-50% by automatically planning and processing application protocols.

Real-time iSCAN (AutoSCAN) provides outstanding images in 2D, 3D or 4D by automatically and continuously optimizing gain and time gain compensation (TGC).

Q-App quantification applications to quantify ultrasound image information, including Intima Media Thickness (IMT) for general imaging and cardiology, and General Imaging 3D Quantification (QLAB GI 3DQ).

* Quantification tools on Affiniti 30 are off-cart only. Not available on-cart.

Comfort meets competence

Philips leverages customer experiences to address the challenges of daily scanning. We understand the reality of tight spaces, high patient volume, technically difficult patients and time constraints, and we designed Affiniti 30 with thoughtful details to help lighten your workload with a system that is easy to learn and use.

Walk-up usability

The intuitive, intelligently designed user interface and system architecture have been validated by studies that show that users with ultrasound experience require minimal training on system use to be able to complete an exam.*

Reduced reach and button pushes

To enhance exam efficiency, relevant and easy-to-learn controls are placed right at your fingertips, streamlining workflow. An intuitive, tablet-like touchscreen interface reduces reach and button pushes. The control panel and generously sized 54.6 cm (21.5 in) monitor add to the system's ergonomics, enhancing scanning comfort whether standing or sitting.



A superb modular design for enhanced reliability and rapid repair.

Results are easy to share

When an exam is finished, a full suite of DICOM capabilities makes it easy to share information.

A smart investment

The value of a Philips ultrasound system extends far beyond technology, and includes access to our award-winning service organization,** competitive financing and educational tools that help you get the most out of your system.†

Defense-in-depth security

Affiniti 30 offers a defense-in-depth strategy, implementing a suite of security features designed to help clinical IT professionals and healthcare facilities provide additional patient data privacy and virus protection, as well as protection from unauthorized access via the ultrasound systems on hospital networks.

Affiniti 30 consumes nearly

40%
less power

than its predecessor.††
It consumes less energy than a toaster, which can help you save on energy and cooling costs.



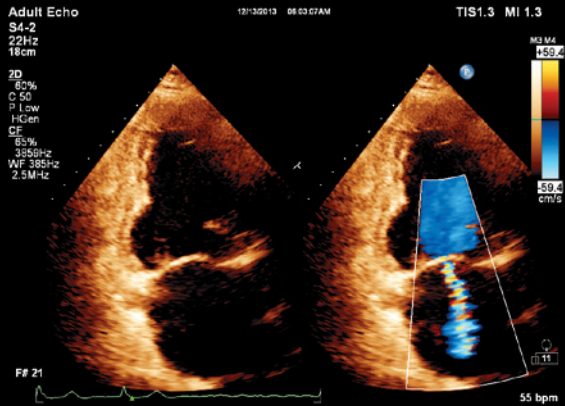
* 2014 internal workflow study comparing Philips Affiniti to Philips HD15.

** Philips is rated number one in overall service performance for ultrasound for more than 25 years in the annual IMV ServiceTrak survey in the USA.

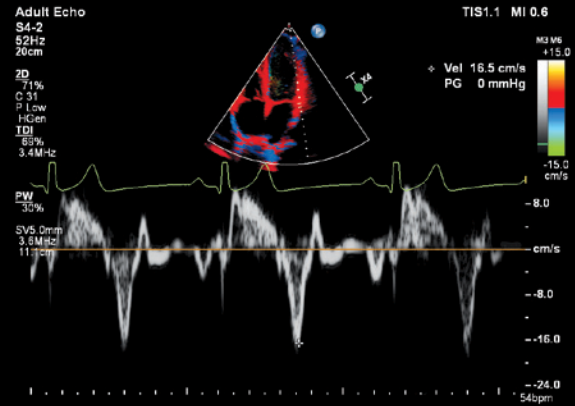
† Optional. Not all services available in all geographies; contact your Philips representative for more information. May require service contract.

†† Philips HD15 is the predecessor system.

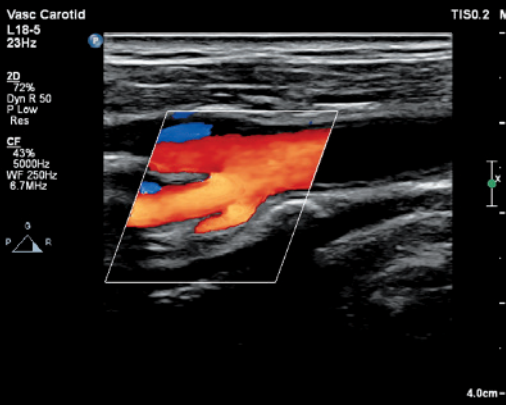
Performance you can see



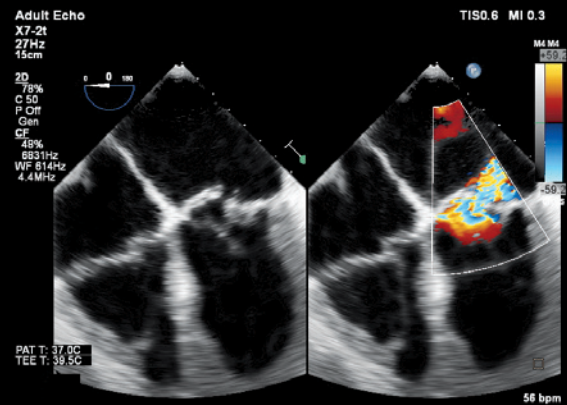
Mitral regurgitation



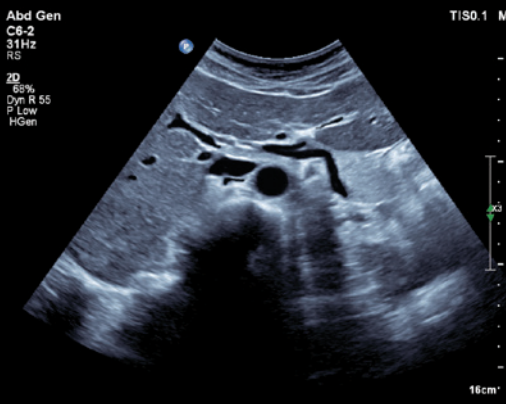
TDI PW



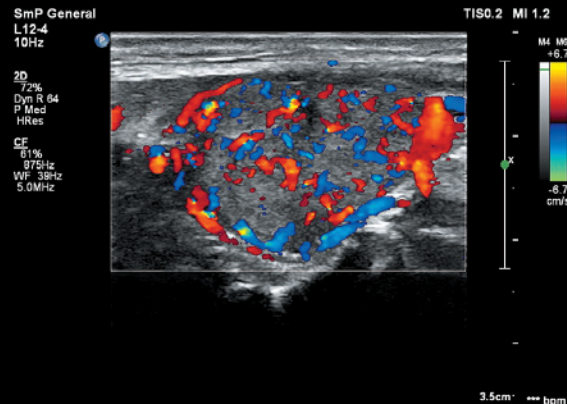
Carotid bulb



Mitral valve prolapse



Liver



Thyroid color doppler



© 2019 Koninklijke Philips N.V. All rights are reserved.
Philips reserves the right to make changes in specifications and/or to discontinue any product at any time without notice or obligation and will not be liable for any consequences resulting from the use of this publication. Trademarks are the property of Koninklijke Philips N.V. or their respective owners.

philips.com/Affiniti

Printed in The Netherlands.
4522 991 50851 * JUN 2019